

DRUŠTVENO POTICANA STANOGRADNJA

**POS**  
**GRAD METKOVIĆ**

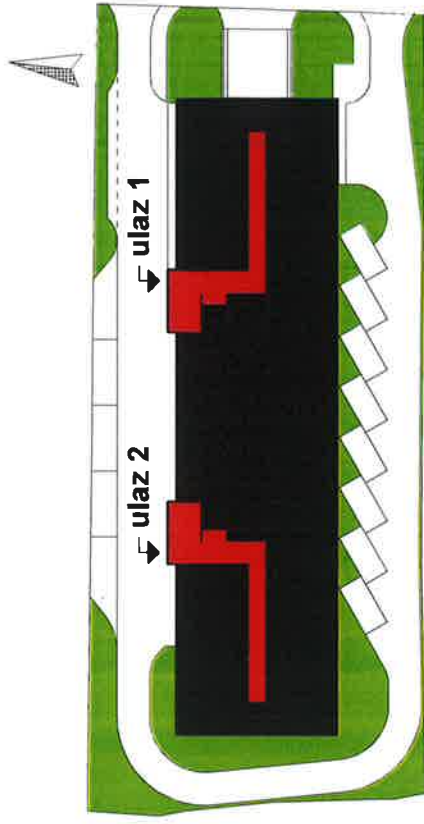


KATALOG NEPRODANIH STANOVA

(22)

# KATALOG STANOVA

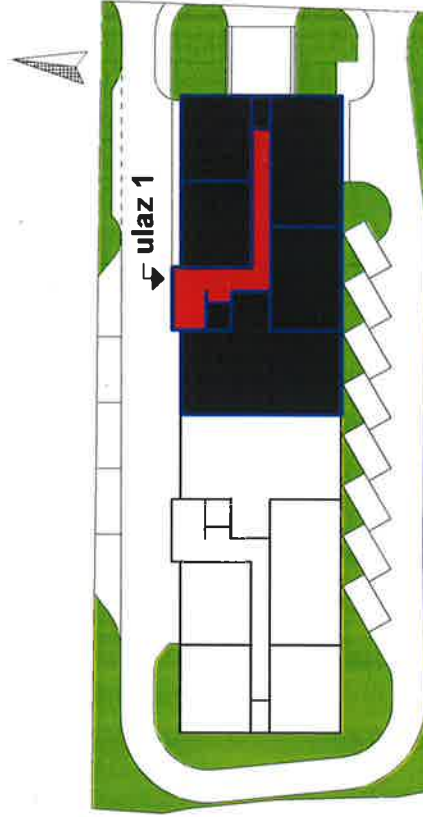
S



STAMBENA GRADEVINA SG 55  
METKOVIĆ

# ULAZ 1

S

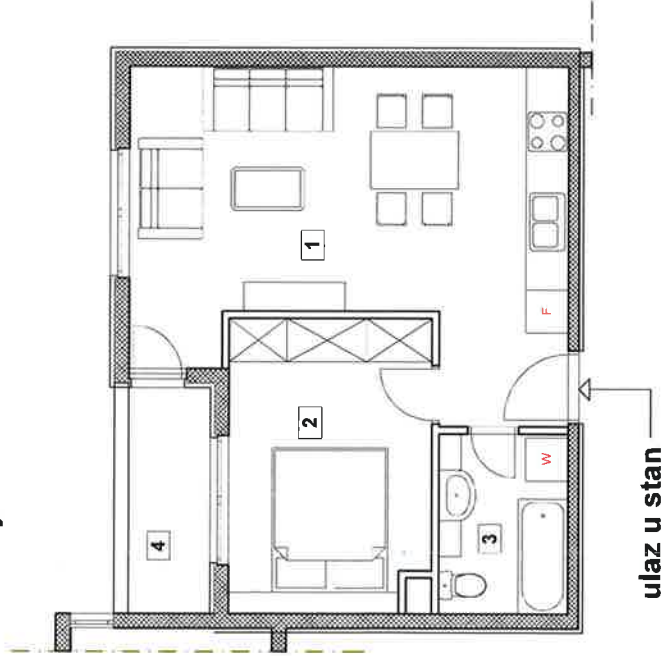


ULAZ 1

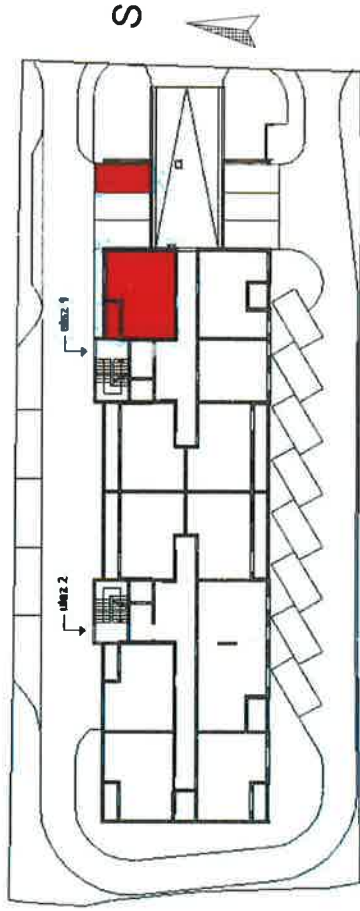
PRIZEMLJE

STAN - S1

jednosoban stan m 1:100



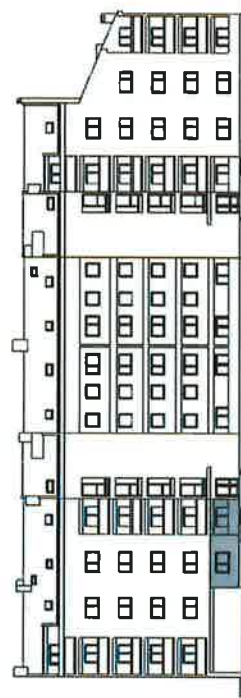
ISKAZ NETTO POVRŠINA - ULAZ 1- STAN S1	
1 dnevni boravak sa kuhinjom	24,70 m <sup>2</sup>
2 soba	11,20 m <sup>2</sup>
3 kupaonica	4,50 m <sup>2</sup>
4 hodnik (3,60 x 0,75)	2,70 m <sup>2</sup>
<b>ukupno stan :</b>	<b>43,10 m<sup>2</sup></b>
5 VP1 (11,5x0,25)	2,88 m <sup>2</sup>
<b>sveukupno :</b>	<b>45,98 m<sup>2</sup></b>



tlocrt prizemlja



tlocrt podruma



pročelje  
sjeverno



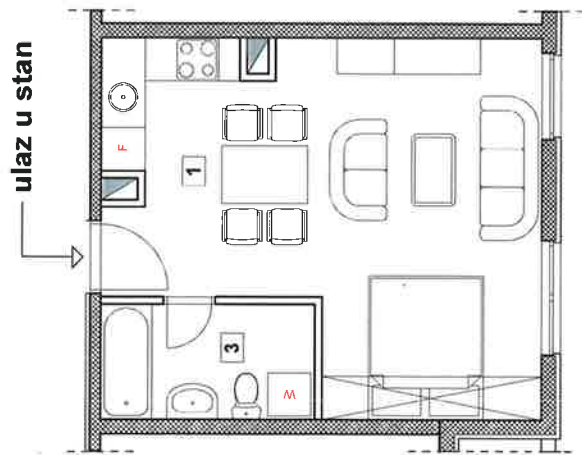
STAMBENA GRAĐEVINA SG 55  
METKOVIĆ

ULAZ 1

PRIZEMLJE

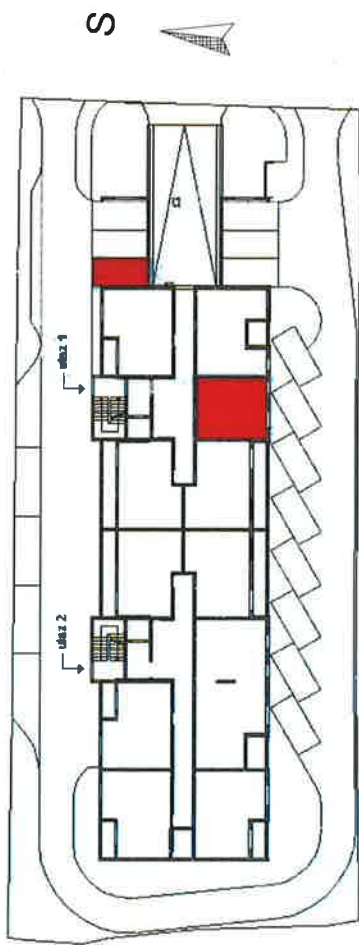
STAN - S3

jednosoban stan m 1:100

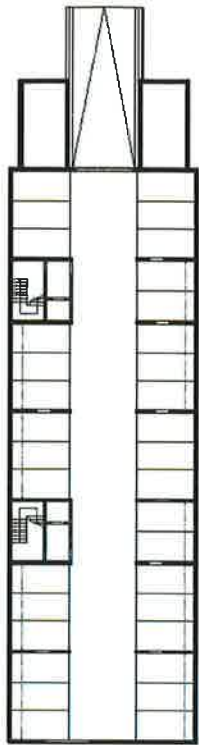


**ISKAZ NETTO POVRŠINA - ULAZ 1 - STAN S3**

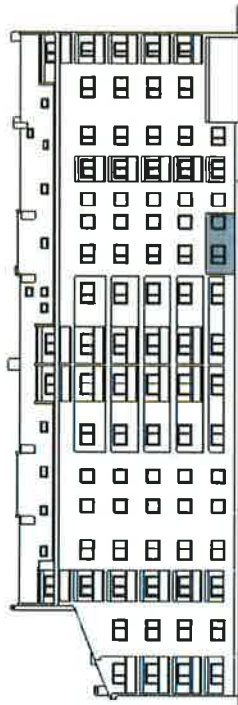
1   dnevni boravak sa kuhinjom	26,50 m <sup>2</sup>
2   kupaonica	4,70 m <sup>2</sup>
<b>ukupno stan :</b>	<b>31,20 m<sup>2</sup></b>
5   VP3 (11.5x0,25)	2,88 m <sup>2</sup>
<b>sveukupno :</b>	<b>34,08 m<sup>2</sup></b>



tlocrt prizemlja



tlocrt podruma



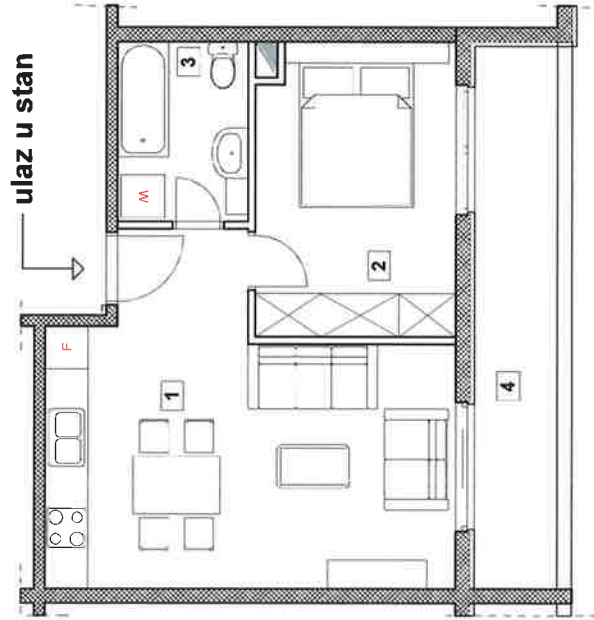
pročelje  
južno



**STAMBENA GRADEVINA SG 55**  
**METKOVIĆ**



jednosoban stan m 1:100

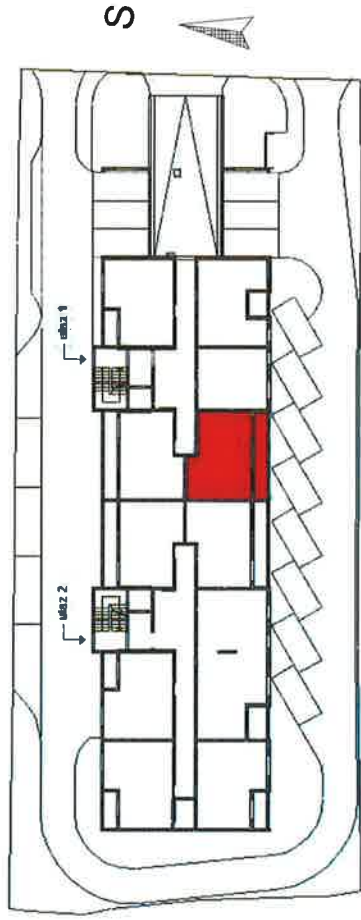


ISKAZ NETTO POVRŠINA - ULAZ 1- STAN S4	
1 dnevni boravak sa kuhinjom	22,50 m <sup>2</sup>
2 soba	11,20 m <sup>2</sup>
3 kupaonica	4,50 m <sup>2</sup>
4 loda (8,60 x 0,75)	6,45 m <sup>2</sup>
<b>ukupno stan :</b>	<b>44,64 m<sup>2</sup></b>
5 GP1 (13,0x0,60)	7,80 m <sup>2</sup>
<b>sveukupno :</b>	<b>52,45 m<sup>2</sup></b>

ULAZ 1

PRIZEMLJE

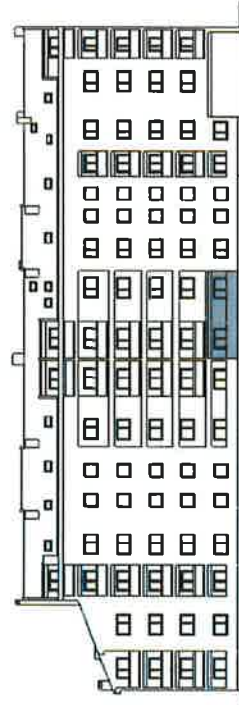
STAN - S4



točrt prizemlja



točrt podruma



pročelje  
južno



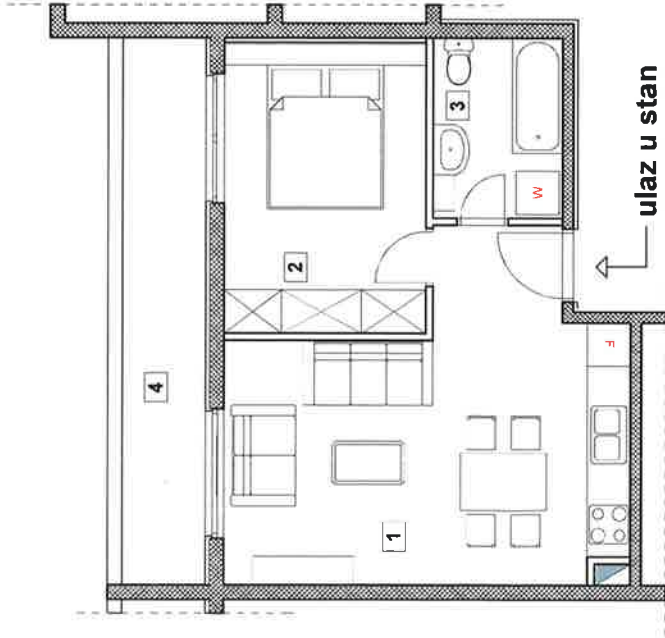
STAMBENA GRADEVINA SG 55  
METKOVIĆ

ULAZ 1

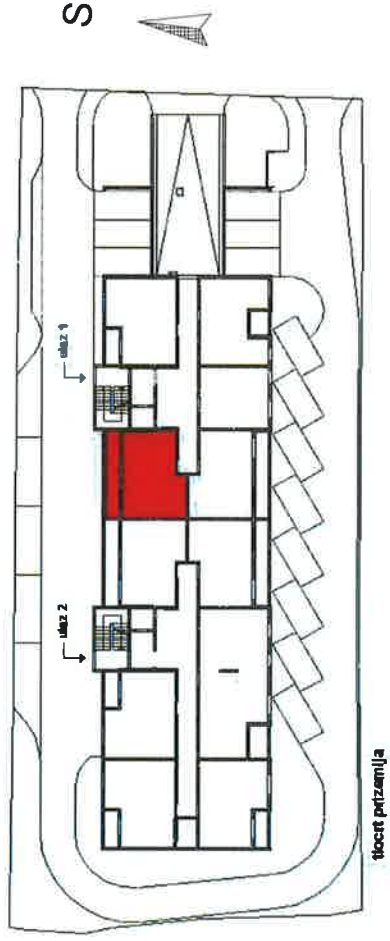
PRIZEMLJE

STAN - S5

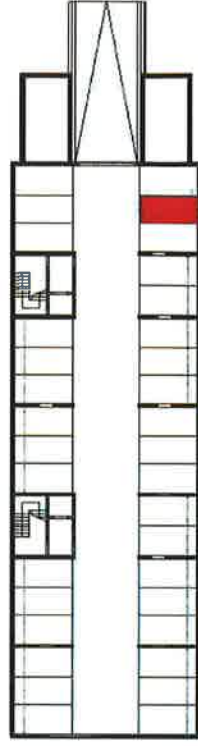
jednosoban stan m 1:100



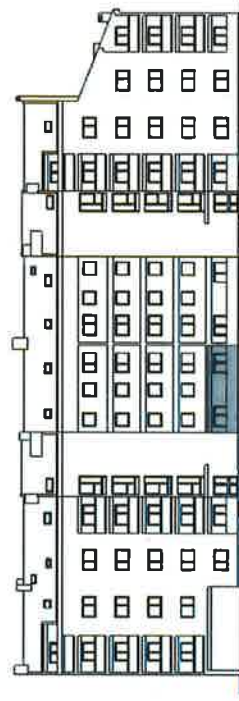
ISKAZ NETTO POVRŠINA - ULAZ 1- STAN S5	
1 dnevni boravak sa kuhinjom	22,10 m <sup>2</sup>
2 soba	11,30 m <sup>2</sup>
3 kupaonica	4,50 m <sup>2</sup>
4 loda (8,70 x 0,75)	6,53 m <sup>2</sup>
<b>ukupno stan :</b>	<b>44,43 m<sup>2</sup></b>
5 GP2 (12,0x0,60)	7,20 m <sup>2</sup>
<b>sveukupno :</b>	<b>51,63 m<sup>2</sup></b>



tlocrt prizemlja



tlocrt podruma



pocelje  
sjeverno



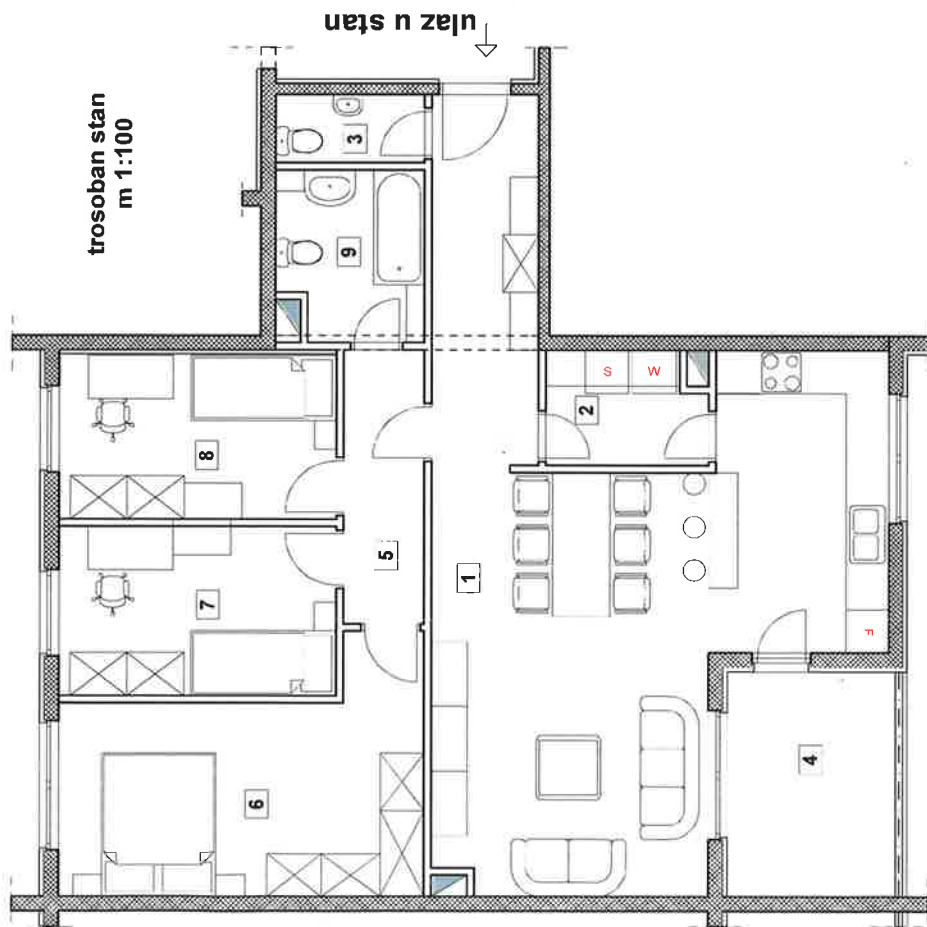
STAMBENA GRAĐEVINA SG 55  
METKOVIĆ



ULAZ 1

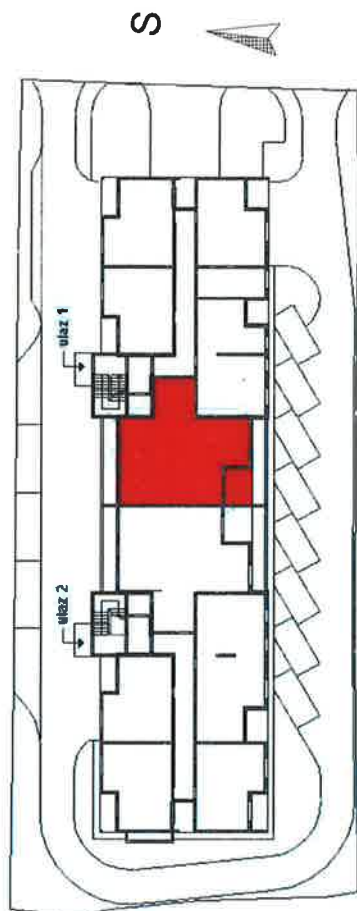
1. KAT

STAN - S10

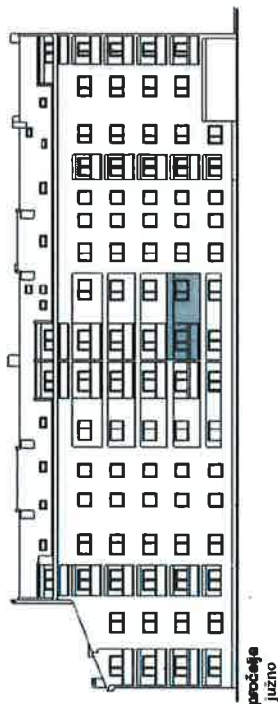
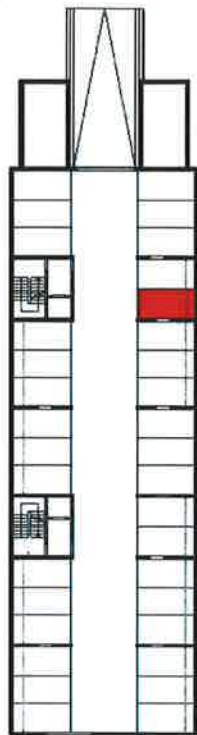


trosoban stan  
m 1:100

ulaz u stan



locirni 1. kata



**ISKAZ NETTO POVRŠINA - ULAZ 1- STAN S10**

1	dnevni boravak sa kuhinjom	40,60 m <sup>2</sup>
2	ostava	3,40 m <sup>2</sup>
3	wc	1,90 m <sup>2</sup>
4	lođa (7,70 x 0,75)	5,78 m <sup>2</sup>
5	predprostor	4,20 m <sup>2</sup>
6	soba	14,70 m <sup>2</sup>
7	soba	9,00 m <sup>2</sup>
8	soba	8,80 m <sup>2</sup>
9	kupaonica	4,60 m <sup>2</sup>
<b>ukupno stan :</b>		<b>92,98 m<sup>2</sup></b>
6	GP5 (13,10x0,60)	7,86 m <sup>2</sup>
<b>sveukupno :</b>		<b>100,84 m<sup>2</sup></b>



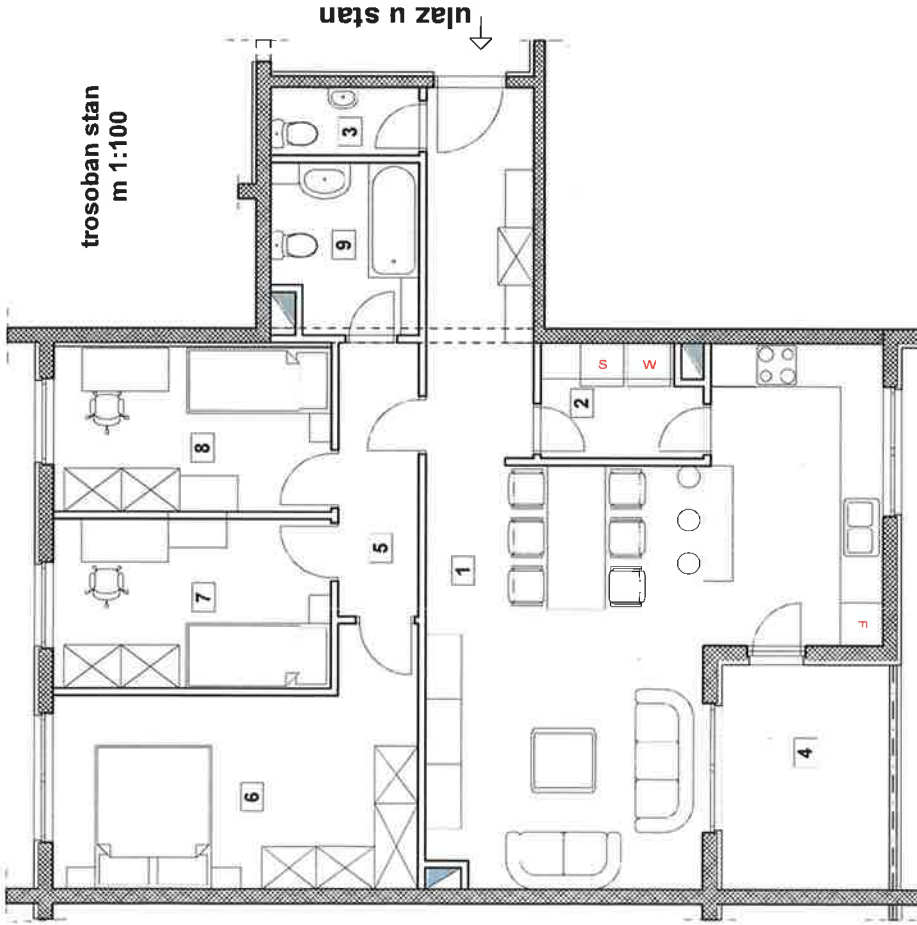
**STAMBENA GRAĐEVINA SG 55  
METKOVIĆ**



ULAZ 1

2. KAT

STAN - S15



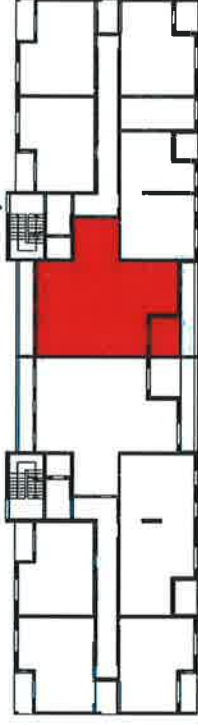
trosoban stan  
m 1:100

ulaz u stan

**ISKAZ NETTO POVRŠINA - ULAZ 1 - STAN S15**

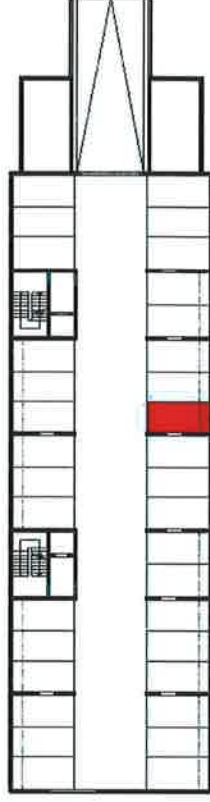
1	dnevni boravak sa kuhinjom	40,60 m <sup>2</sup>
2	ostava	3,40 m <sup>2</sup>
3	wc	1,90 m <sup>2</sup>
4	lođa (7,70 x 0,75)	5,78 m <sup>2</sup>
5	predprostor	4,20 m <sup>2</sup>
6	soba	14,70 m <sup>2</sup>
7	soba	9,00 m <sup>2</sup>
8	soba	8,80 m <sup>2</sup>
9	kupaonica	4,60 m <sup>2</sup>
<b>ukupno stan :</b>		<b>92,98 m<sup>2</sup></b>
6	GP8 (12,70x0,60)	7,62 m <sup>2</sup>
<b>sveukupno :</b>		<b>100,60 m<sup>2</sup></b>

ulaz 1

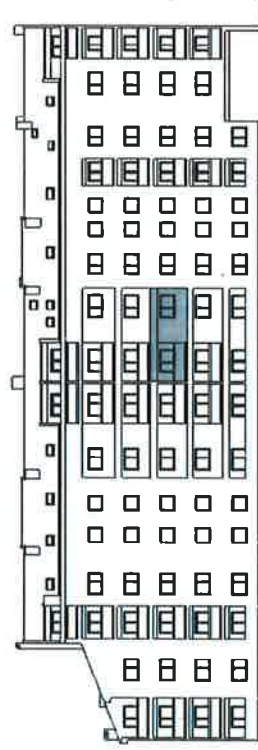


1. doct 2. kata

S



1. doct podružna

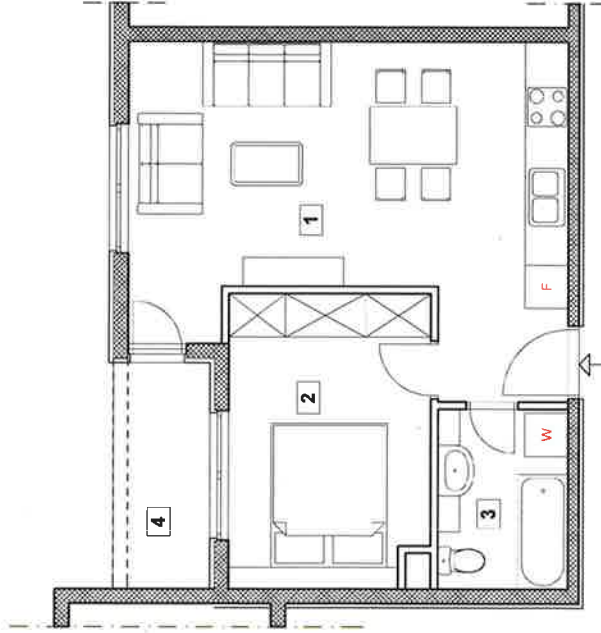


pročelje  
južno



**STAMBENA GRAĐEVINA SG 55**  
**METKOVIĆ**

jednosoban stan m 1:100

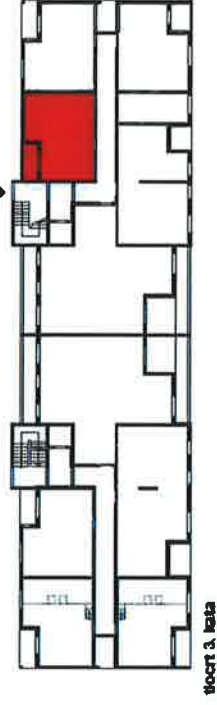


ulaz u stan

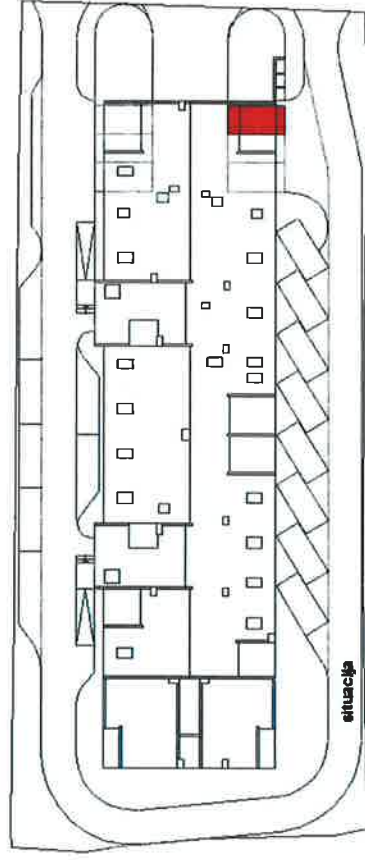
## ISKAZ NETTO POVRŠINA - ULAZ 1- STAN S16

1	dnevni boravak sa kuhinjom	24,70 m <sup>2</sup>
2	soba	11,20 m <sup>2</sup>
3	kupaonica	4,50 m <sup>2</sup>
4	lođa (4,20 x 0,75)	3,15 m <sup>2</sup>
<b>ukupno stan :</b>		<b>43,55 m<sup>2</sup></b>
5	VP21 (11,5x0,25)	2,88 m <sup>2</sup>
<b>sveukupno :</b>		<b>46,43 m<sup>2</sup></b>

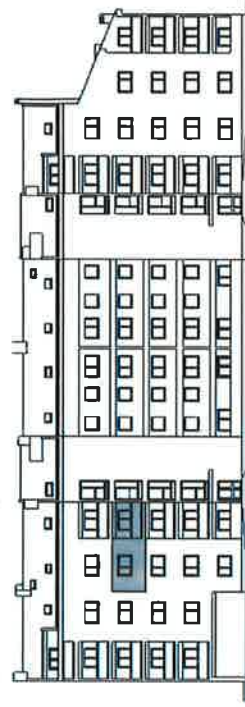
ulaz 1



kroci 3. kata



etnacija

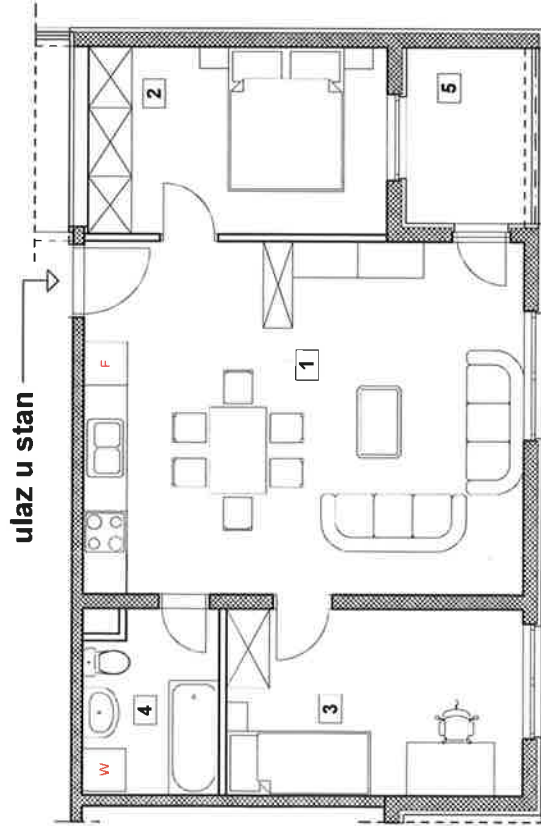
pročelje  
sjeverno

ULAZ 1

4. KAT

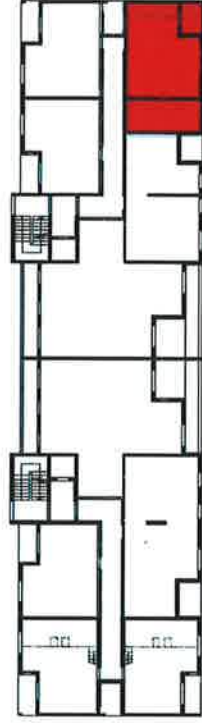
STAN - S23

dvosoban stan m 1:100

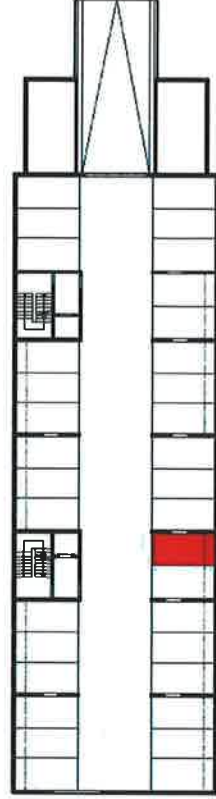


ISKAZ NETTO POVRŠINA - ULAZ 1- STAN S23	
1   dnevni boravak sa kuhinjom	29,90 m <sup>2</sup>
2   soba	10,80 m <sup>2</sup>
3   soba	10,70 m <sup>2</sup>
4   kupaoonica	4,70 m <sup>2</sup>
5   lođa (4,50 x 0,75)	3,38 m <sup>2</sup>
<b>ukupno stan :</b>	<b>59,48 m<sup>2</sup></b>
6   GP 12 (13,10x0,60)	7,86 m <sup>2</sup>
<b>sveukupno :</b>	<b>67,34 m<sup>2</sup></b>

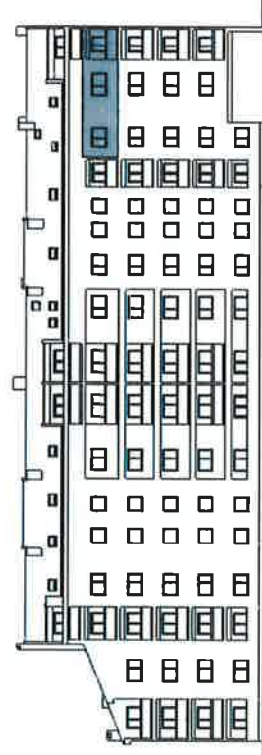
ulaz 1



locrt 4. kata



locrt podruma



pročelje  
južno

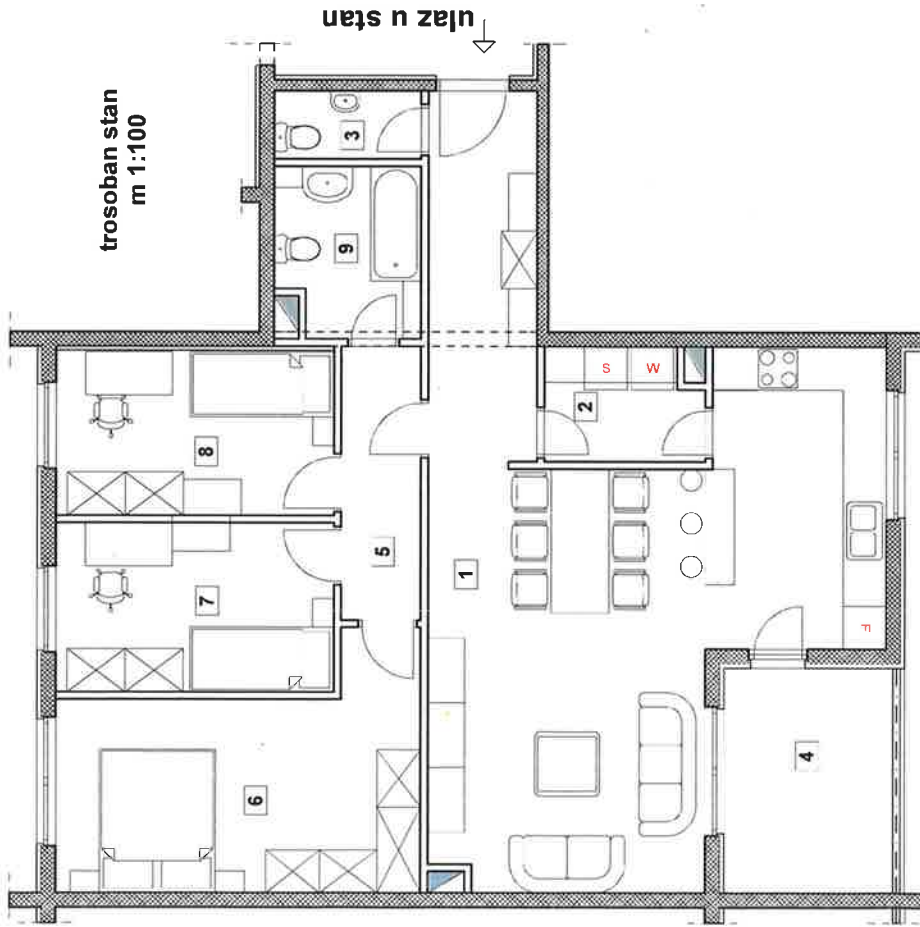


STAMBENA GRAĐEVINA SG 55  
METKOVIĆ

ULAZ 1

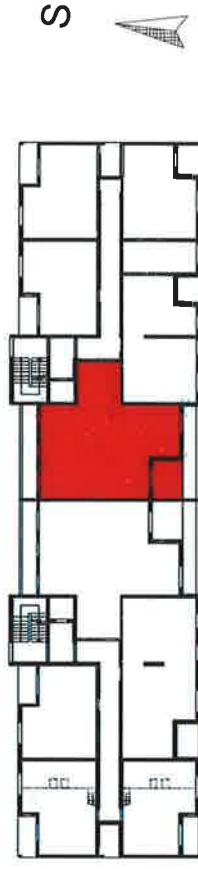
4. KAT

STAN - S25

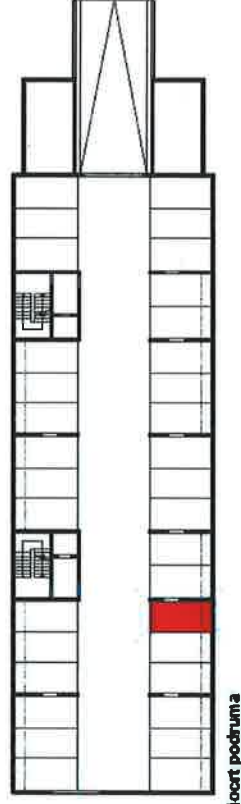


trosoban stan  
m 1:100

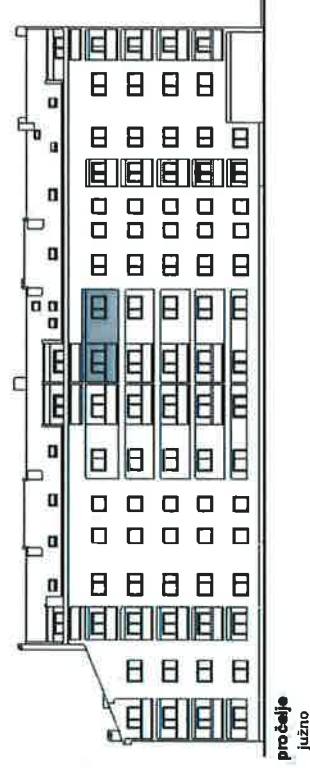
ulaz u stan



stož 4. kata



stož podruma



pročelje  
južno

**ISKAZ NETTO POVRŠINA - ULAZ 1 - STAN S25**

1	dnevni boravak sa kuhinjom	40,60 m <sup>2</sup>
2	ostava	3,40 m <sup>2</sup>
3	WC	1,90 m <sup>2</sup>
4	lođa (7,70 x 0,75)	5,78 m <sup>2</sup>
5	predprostor	4,20 m <sup>2</sup>
6	soba	14,70 m <sup>2</sup>
7	soba	9,00 m <sup>2</sup>
8	soba	8,80 m <sup>2</sup>
9	kupaonica	4,60 m <sup>2</sup>
<b>ukupno stan :</b>		<b>92,98 m<sup>2</sup></b>
6	GP14 (12,90x0,60)	7,74 m <sup>2</sup>
<b>sveukupno :</b>		<b>100,72 m<sup>2</sup></b>

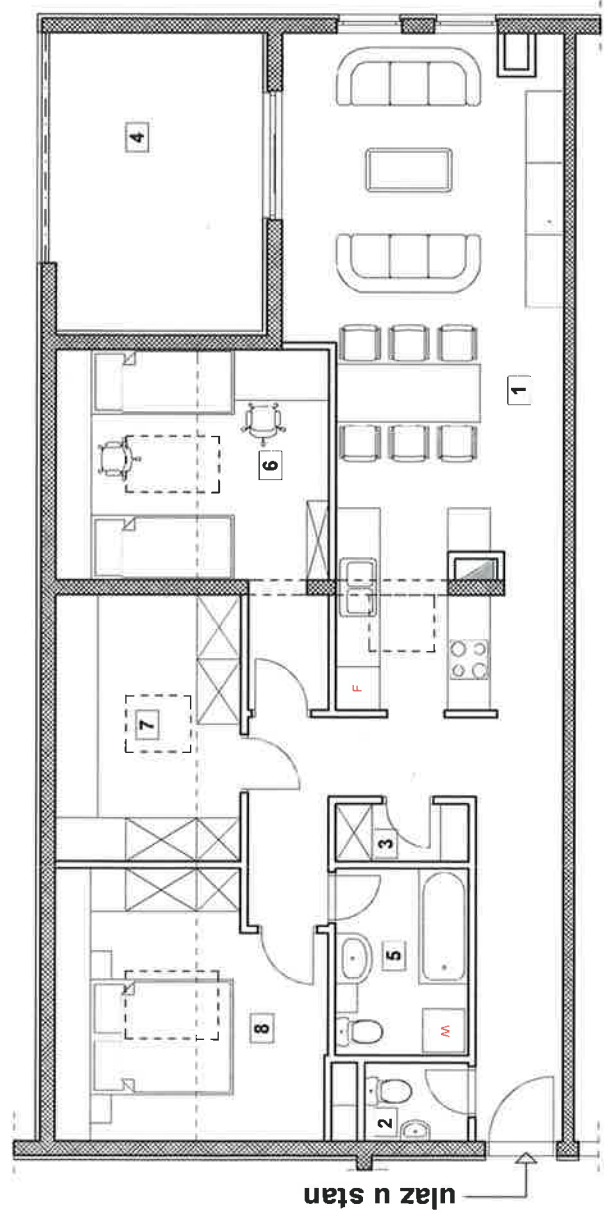


Agencija za planiranje prostora  
Pružatelj usluga arhitekture

**STAMBENA GRAĐEVINA SG 55  
METKOVIĆ**

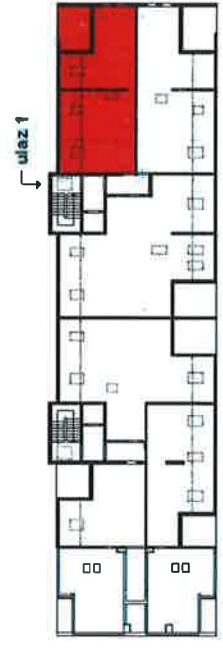


**dvosoban stan m 1:100**

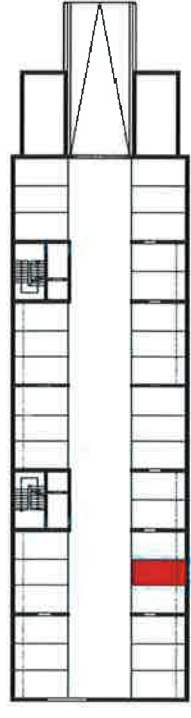


**ISKAZ NETTO POVRŠINA - ULAZ 1- STAN S26**

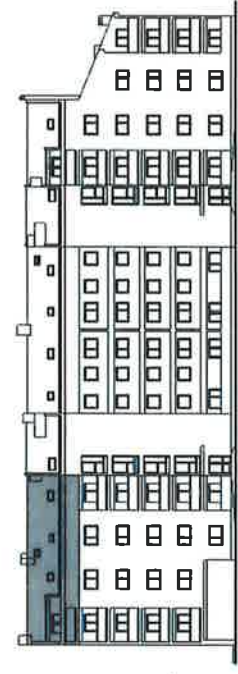
1 dnevni boravak sa kuhinjom	45,20 m <sup>2</sup>
2 wc	1,60 m <sup>2</sup>
3 ostava	1,50 m <sup>2</sup>
4 terasa (12,60 x 0,25)	3,15 m <sup>2</sup>
5 kupaonica	4,80 m <sup>2</sup>
6 soba (7,60x0,75+5,70)	11,40 m <sup>2</sup>
7 garderoba (7,40x0,75+2,20)	7,75 m <sup>2</sup>
8 soba (6,40x0,75+7,70)	12,50 m <sup>2</sup>
<b>ukupno stan :</b>	<b>87,90 m<sup>2</sup></b>
9 GP-15 (12,00x0,60)	7,20 m <sup>2</sup>
<b>sveukupno :</b>	<b>95,10 m<sup>2</sup></b>



potkrovlje



kćert podruma



pročelje sjeverno





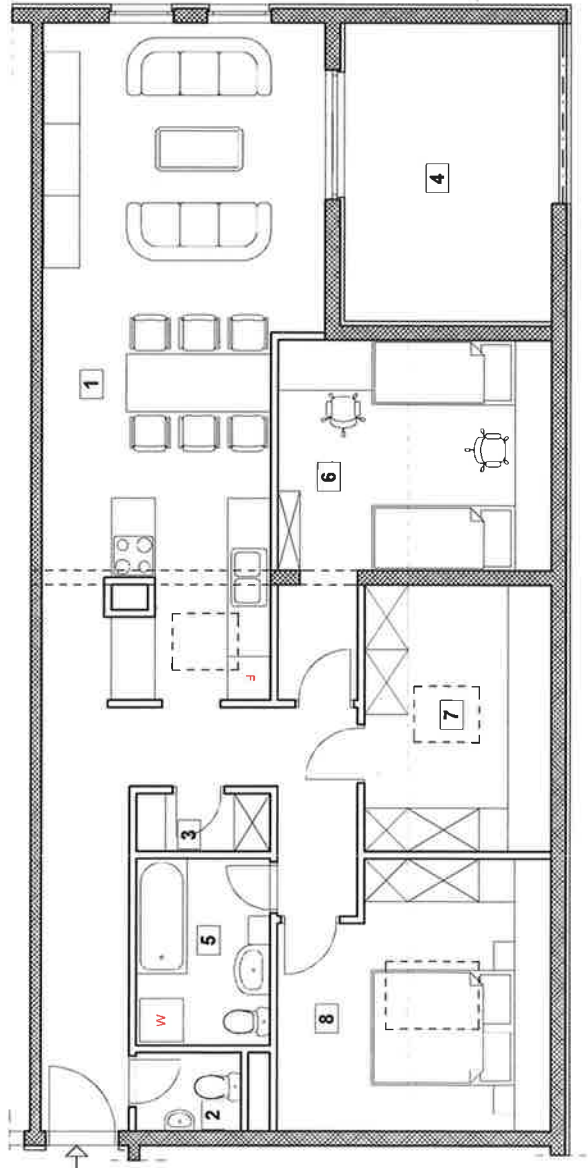
ULAZ 1

POTKROVLJE

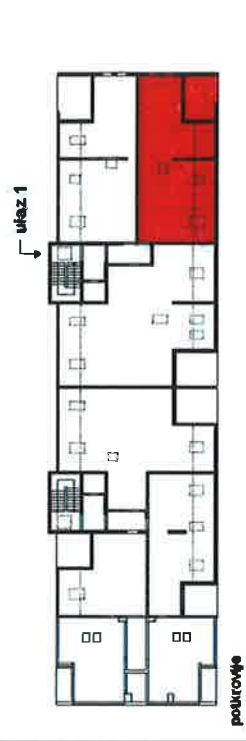
STAN - S27

ulaz u stan

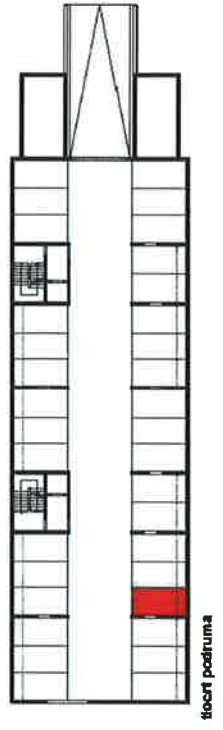
dvosoban stan m 1:100



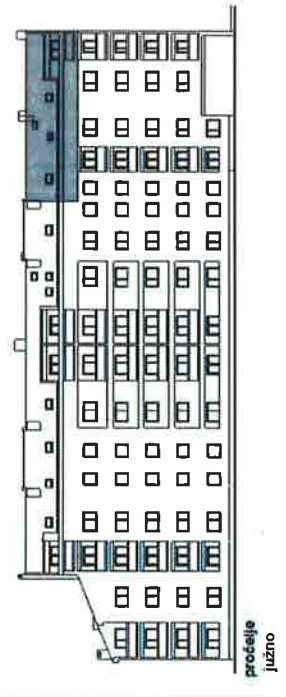
S



podkrovlje



kroft podruma



proljeće  
južno

**ISKAZ NETTO POVRŠINA - ULAZ 1- STAN S27**

1   dnevni boravak sa kuhinjom	45,50 m <sup>2</sup>
2   wc	1,60 m <sup>2</sup>
3   ostava	1,50 m <sup>2</sup>
4   terasa (12,50 x 0,25)	3,13 m <sup>2</sup>
5   kupaoonica	4,80 m <sup>2</sup>
6   soba (7,60x0,75+5,80)	11,50 m <sup>2</sup>
7   garderoba (7,40x0,75+2,20)	7,75 m <sup>2</sup>
8   soba (6,40x0,75+7,70)	12,50 m <sup>2</sup>
<b>ukupno stan :</b>	<b>88,28 m<sup>2</sup></b>
9   GP-16 (12,90x0,60)	7,74 m <sup>2</sup>
<b>sveukupno :</b>	<b>96,02 m<sup>2</sup></b>

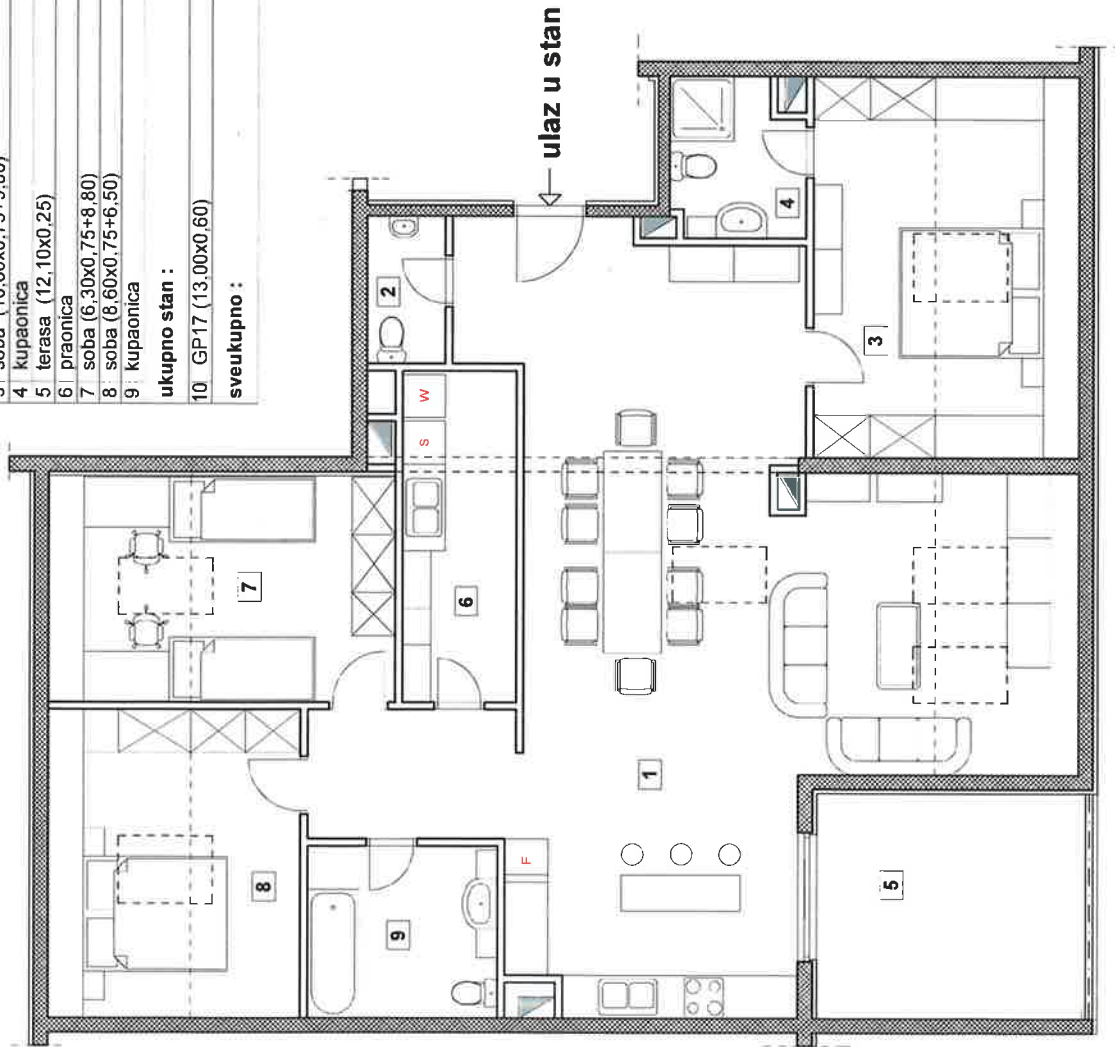


**STAMBENA GRAĐEVINA SG 55  
METKOVIĆ**

trošoban stan  
m 1:100

ISKAZ NETTO POVRŠINA - ULAZ 1- STAN S28

1. dnevni bor. sa kuh. (8,40x0,75+56,90)	63,20 m <sup>2</sup>
2. wc	2,30 m <sup>2</sup>
3. soba (10,60x0,75+9,00)	16,95 m <sup>2</sup>
4. kupaonica	3,90 m <sup>2</sup>
5. terasa (12,10x0,25)	3,03 m <sup>2</sup>
6. praonica	7,40 m <sup>2</sup>
7. soba (6,30x0,75+8,80)	13,53 m <sup>2</sup>
8. soba (8,60x0,75+6,50)	12,95 m <sup>2</sup>
9. kupaonica	6,40 m <sup>2</sup>
<b>ukupno stan :</b>	<b>129,66 m<sup>2</sup></b>
10. GP-17 (13,00x0,60)	7,80 m <sup>2</sup>
<b>sveukupno :</b>	<b>137,46 m<sup>2</sup></b>



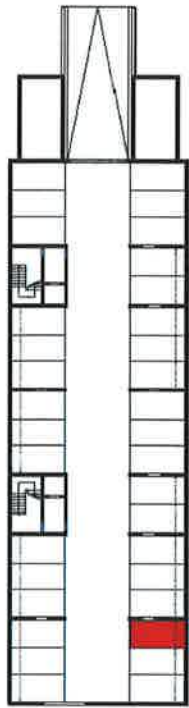
S



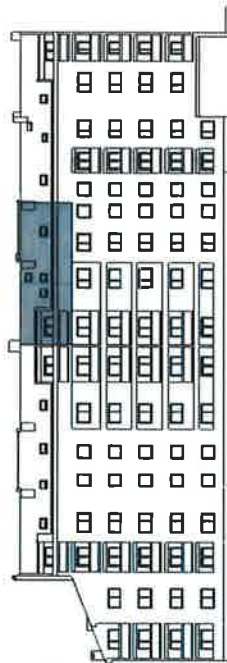
ulaz 1



potkrovlje



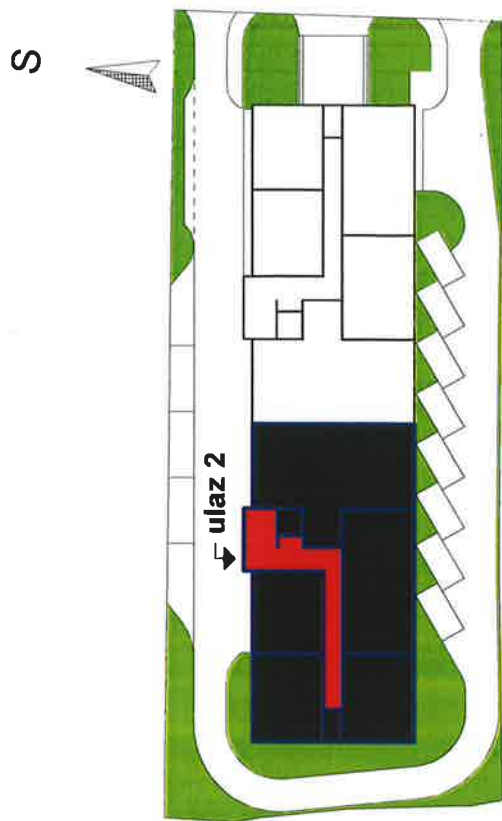
šest podruma



prečije  
južno



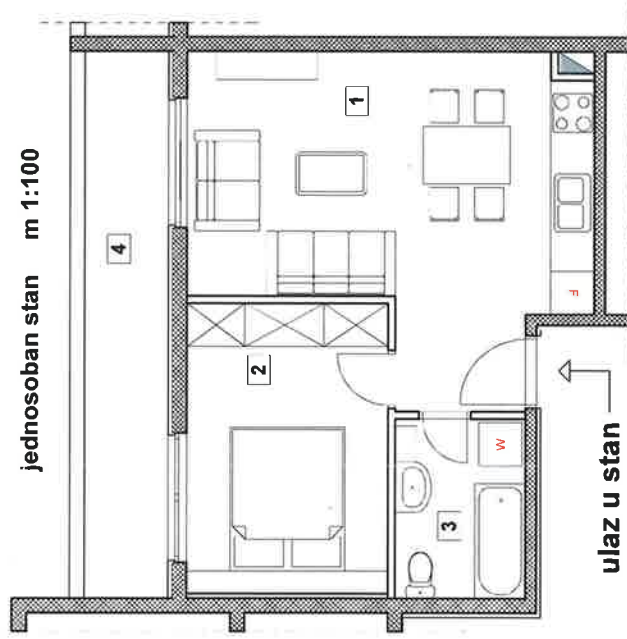
# ULAZ 2



ULAZ 2

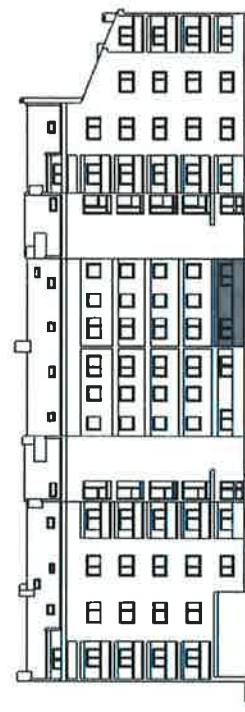
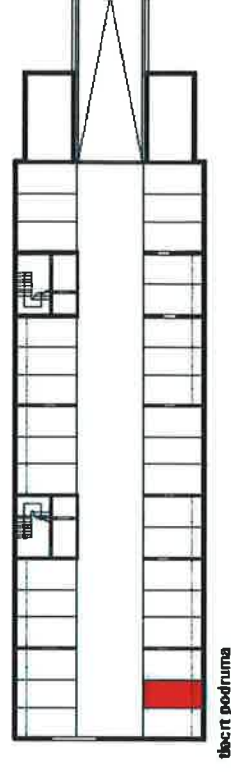
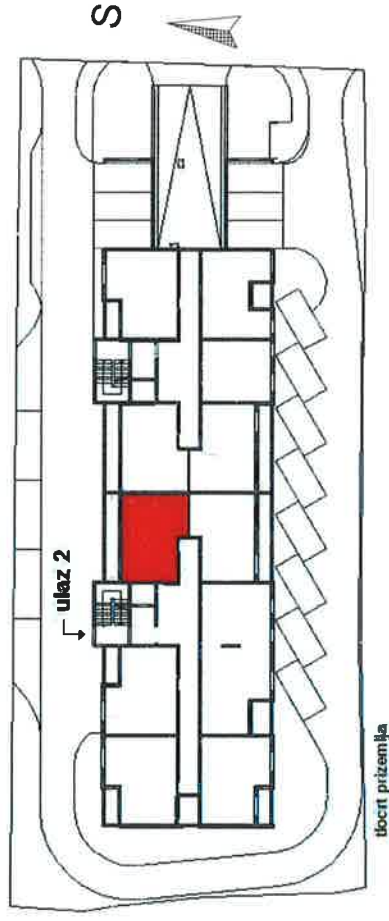
PRIZEMLJE

STAN - S1



**ISKAZ NETTO POVRŠINA - ULAZ 2- STAN S1**

1   dnevni boravak sa kuhinjom	22,10 m <sup>2</sup>
2   soba	11,30 m <sup>2</sup>
3   kupaonica	4,50 m <sup>2</sup>
4   lođa (8,70 x 0,75)	6,53 m <sup>2</sup>
<b>ukupno stan :</b>	<b>44,43 m<sup>2</sup></b>
5   GP-18 (12,00x0,60)	7,20 m <sup>2</sup>
<b>sveukupno :</b>	<b>51,63 m<sup>2</sup></b>

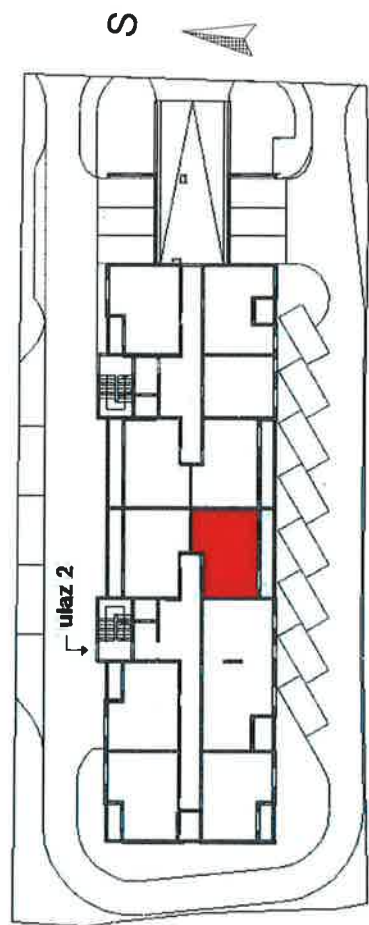
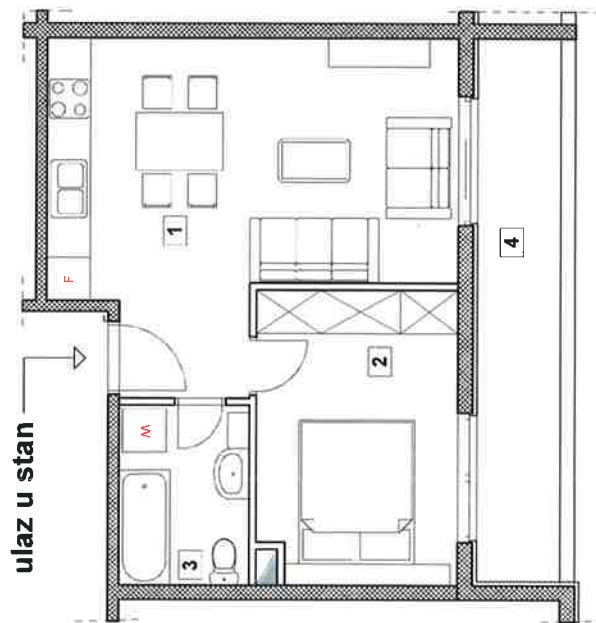


ULAZ 2

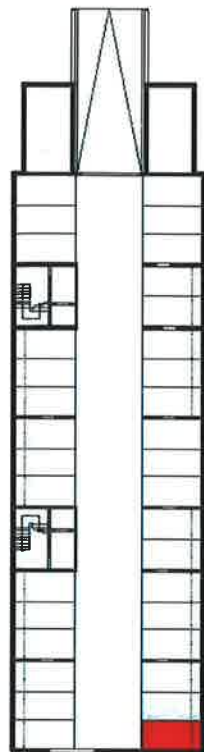
PRIZEMLJE

STAN - S2

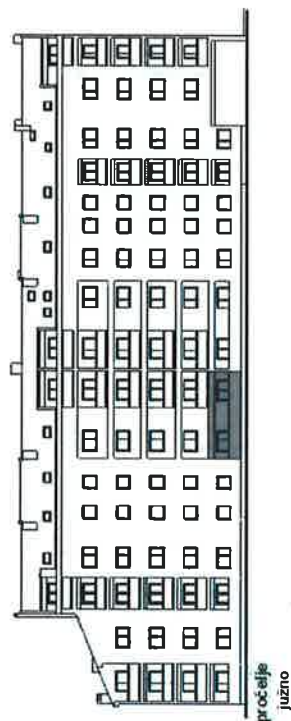
jednosoban stan m 1:100



tlocrt prizemlja



tlocrt podruma



pročelnje  
južno

**ISKAZ NETTO POVRŠINA - ULAZ 2- STAN S2**

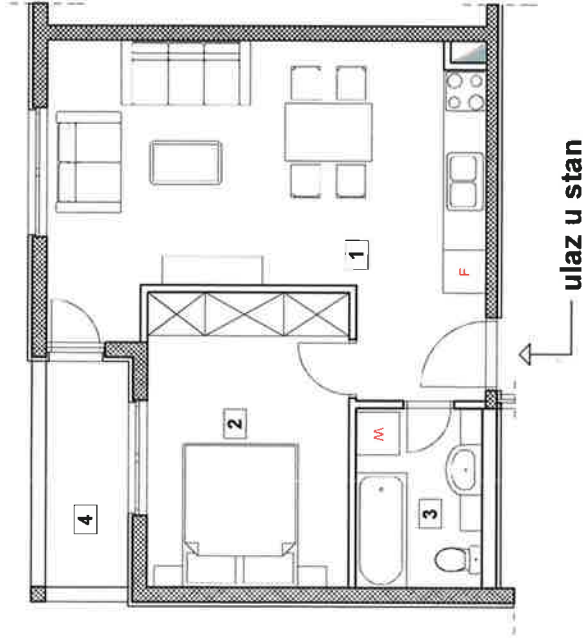
1	dnevni boravak sa kuhinjom	22,50 m2
2	soba	11,10 m2
3	kupaonica	4,40 m2
4	hoda (8,60 x 0,75)	6,45 m2
	<b>ukupno stan :</b>	<b>44,45 m2</b>
5	GP19 (13,0x0,60)	7,80 m2
	<b>sveukupno :</b>	<b>52,25 m2</b>



**STAMBENA GRAĐEVINA SG 55  
METKOVIĆ**



jednosoban stan m 1:100

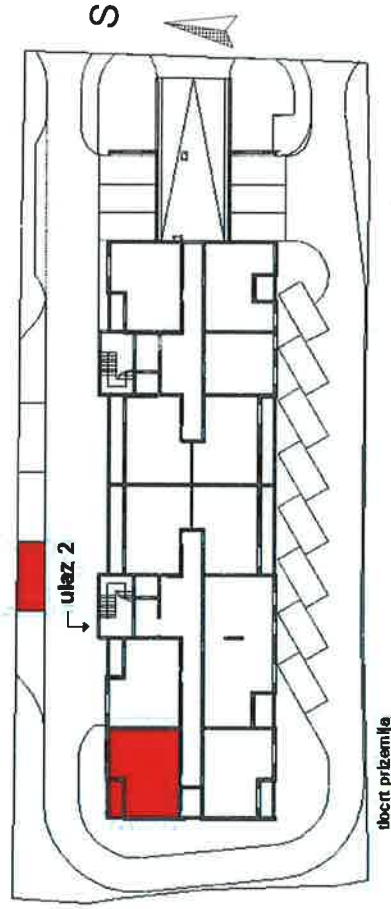


ISKAZ NETTO POVRŠINA - ULAZ 2 - STAN S5	
1 dnevni boravak sa kuhinjom	24,40 m <sup>2</sup>
2 soba	11,50 m <sup>2</sup>
3 kupaoznica	4,40 m <sup>2</sup>
4 loda (3,60 x 0,75)	2,70 m <sup>2</sup>
<b>ukupno stan :</b>	<b>43,00 m<sup>2</sup></b>
5 VP7 (11,5x0,25)	2,88 m <sup>2</sup>
<b>sveukupno :</b>	<b>45,88 m<sup>2</sup></b>

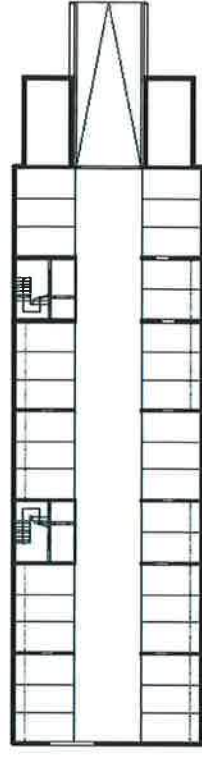
ULAZ 2

PRIZEMLJE

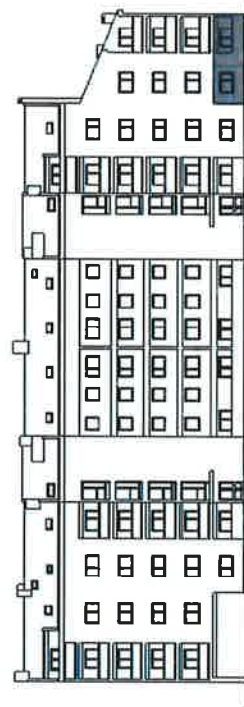
STAN - S5



tlocrt prizemlja



tlocrt podruma



probjele  
sjeverno



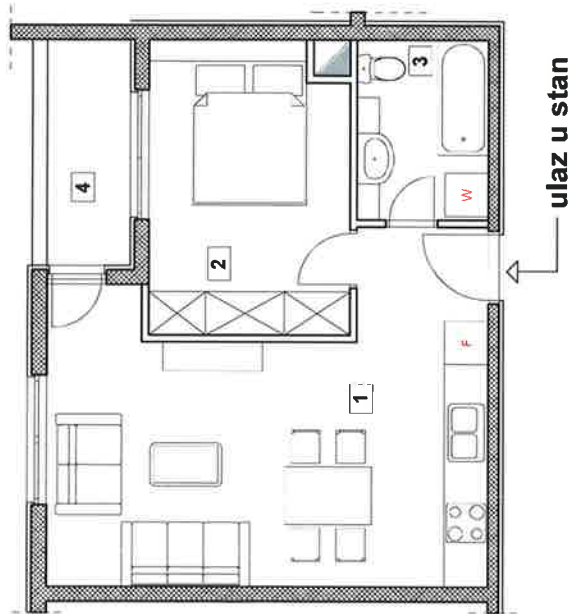
STAMBENA GRAĐEVINA SG 55  
METKOVIĆ

ULAZ 2

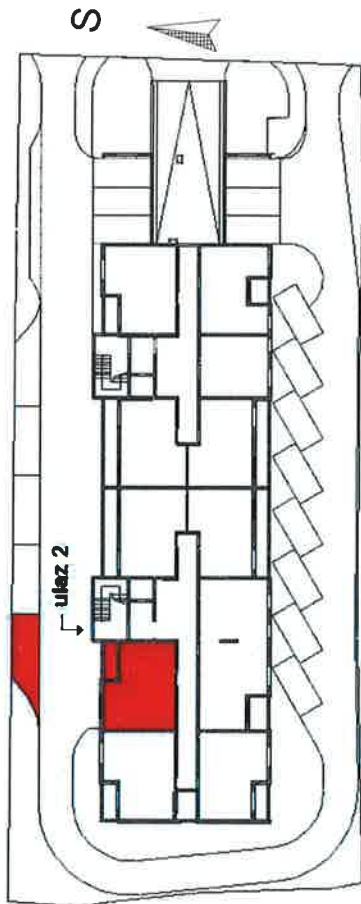
PRIZEMLJE

STAN - S6

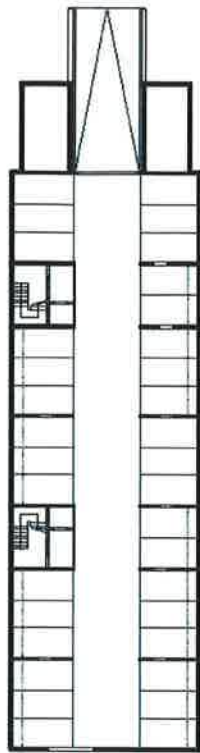
jednosoban stan m 1:100



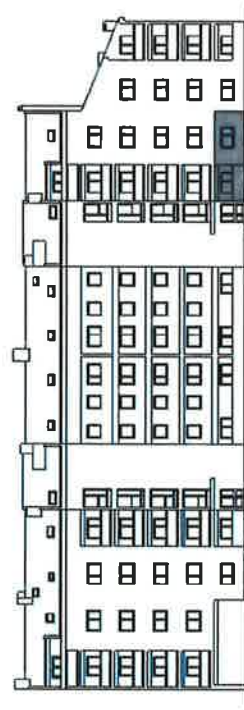
ISKAZ NETTO POVRŠINA - ULAZ 2- STAN S6	
1 dnevni boravak sa kuhinjom	24,70 m <sup>2</sup>
2 soba	11,10 m <sup>2</sup>
3 kupaoonica	4,50 m <sup>2</sup>
4 loda (3,60 x 0,75)	2,70 m <sup>2</sup>
<b>ukupno stan :</b>	<b>43,00 m<sup>2</sup></b>
5 VP8 (11,5x0,25)	2,88 m <sup>2</sup>
<b>sveukupno :</b>	<b>45,88 m<sup>2</sup></b>



točrt prizemlja



točrt podruma



pracelje  
sjeverno



STAMBENA GRAĐEVINA SG 55  
METKOVIĆ

ULAZ 2

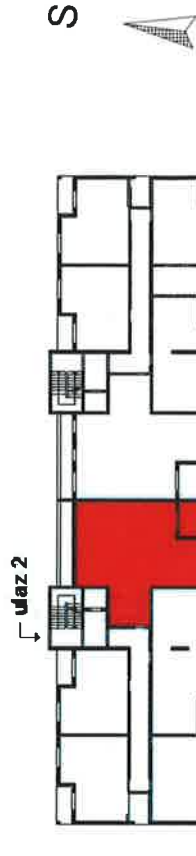
1. KAT

STAN - S7

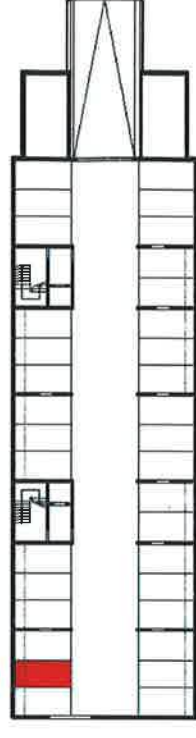


trošoban stan m 1:100

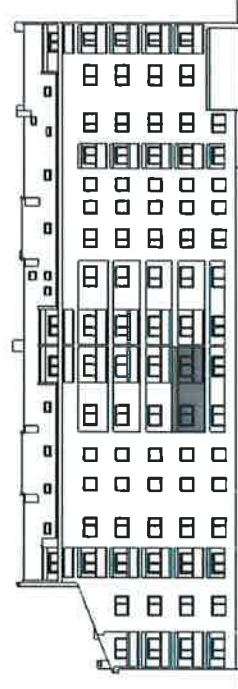
ISKAZ NETTO POVRŠINA - ULAZ 2- STAN SZ	
1 dnevni boravak sa kuhinjom	40,50 m <sup>2</sup>
2 ostava	3,30 m <sup>2</sup>
3 wc	1,90 m <sup>2</sup>
4 lođa (7,70 x 0,75)	5,78 m <sup>2</sup>
5 predprostor	4,20 m <sup>2</sup>
6 soba	14,70 m <sup>2</sup>
7 soba	9,00 m <sup>2</sup>
8 soba	8,80 m <sup>2</sup>
9 kupaonica	4,50 m <sup>2</sup>
<b>ukupno stan :</b>	<b>92,68 m<sup>2</sup></b>
6 GP21 (12,00x0,60)	7,20 m <sup>2</sup>
<b>sveukupno :</b>	<b>99,88 m<sup>2</sup></b>



locir 2. kata



locir podruma



parcela južno

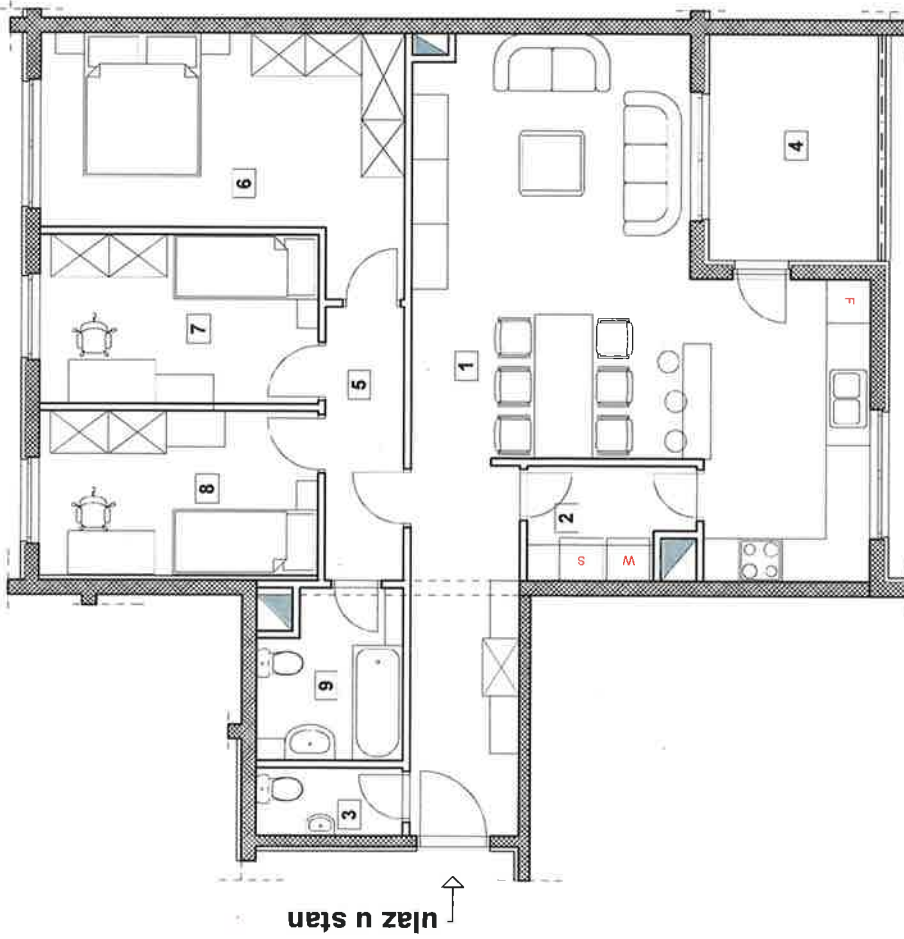


STAMBENA GRADEVINA SG 55  
METKOVIĆ

ULAZ 2

2. KAT

STAN - S12

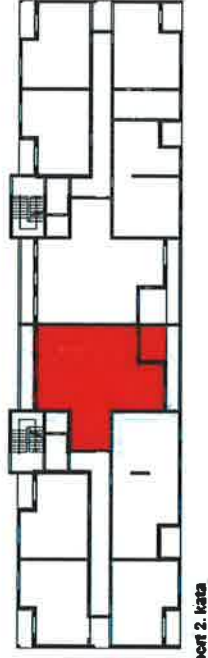


trosoban stan m 1:100

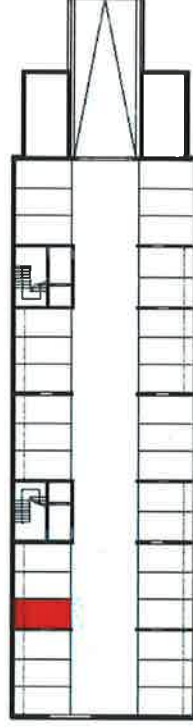
ISKAZ NETTO POVRŠINA - ULAZ 2 - STAN S12

1   dnevni boravak sa kuhinjom	40,50 m <sup>2</sup>
2   ostava	3,30 m <sup>2</sup>
3   WC	1,90 m <sup>2</sup>
4   loda (7,70 x 0,75)	5,78 m <sup>2</sup>
5   predprostor	4,20 m <sup>2</sup>
6   soba	14,70 m <sup>2</sup>
7   soba	9,00 m <sup>2</sup>
8   soba	8,80 m <sup>2</sup>
9   kupaonica	4,50 m <sup>2</sup>
<b>ukupno stan :</b>	<b>92,68 m<sup>2</sup></b>
6   GP23 (12,90x0,60)	7,74 m <sup>2</sup>
<b>sveukupno :</b>	<b>100,42 m<sup>2</sup></b>

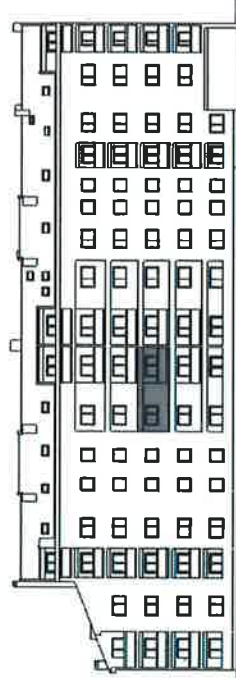
ulaz 2



stož 2. kata



stož podruma



prošlje  
južno



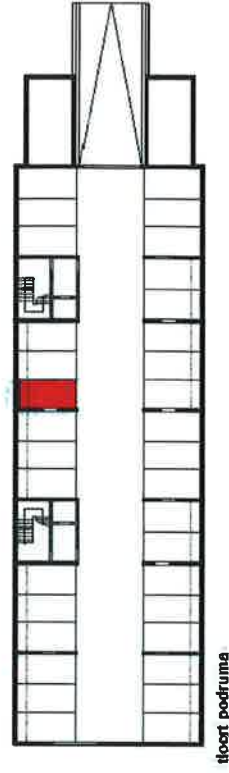
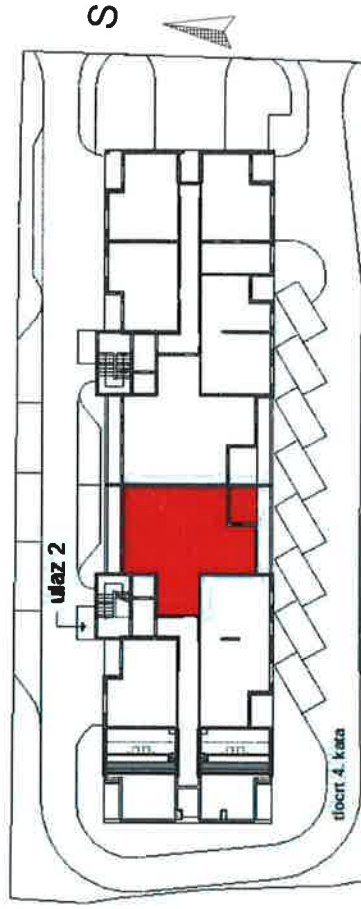
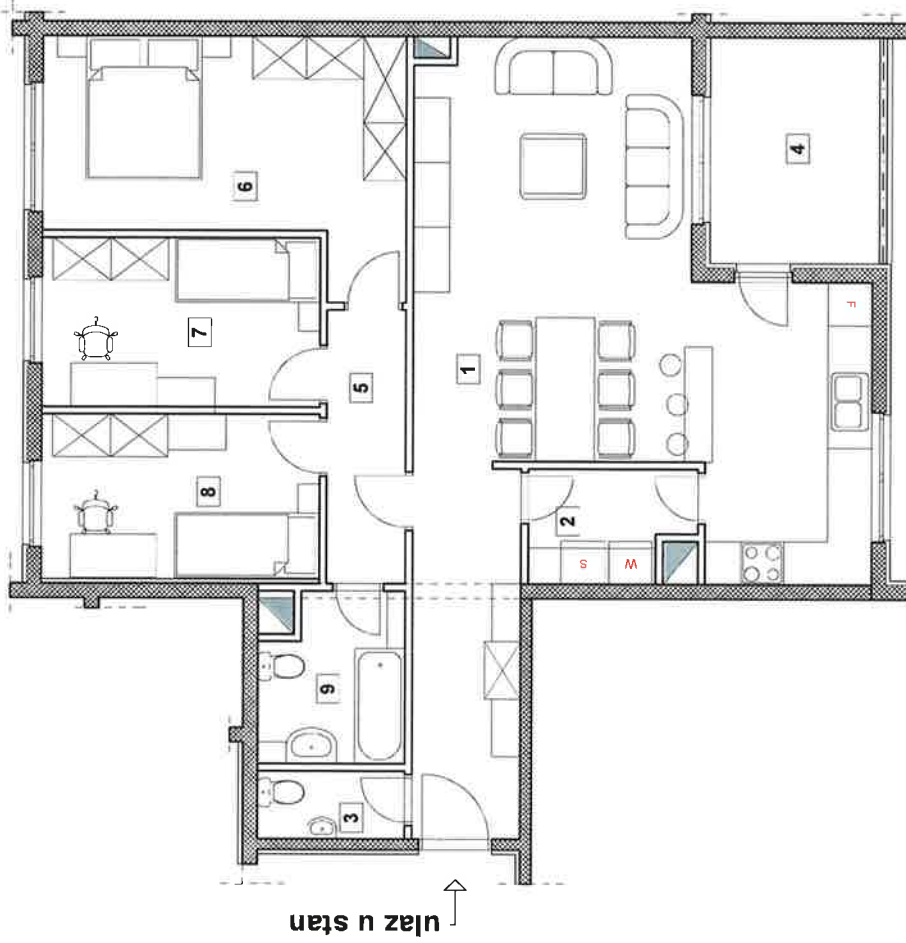
STAMBENA GRADEVINA SG 55  
METKOVIĆ



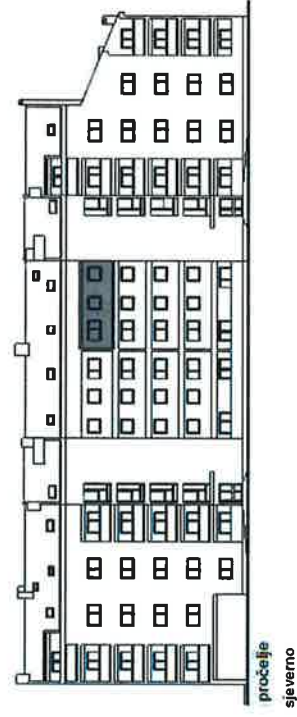
ULAZ 2

4. KAT

STAN - S22



tloort podruma



trosoban stan m 1:100

ISKAZ NETTO POVRŠINA - ULAZ 2- STAN S22

1	dnevni boravak sa kuhinjom	40,50 m <sup>2</sup>
2	ostava	3,30 m <sup>2</sup>
3	wc	1,90 m <sup>2</sup>
4	lođa (7,70 x 0,75)	5,78 m <sup>2</sup>
5	predprostor	4,20 m <sup>2</sup>
6	soba	14,70 m <sup>2</sup>
7	soba	9,00 m <sup>2</sup>
8	soba	8,80 m <sup>2</sup>
9	kupaonica	4,50 m <sup>2</sup>
<b>ukupno stan :</b>		<b>92,68 m<sup>2</sup></b>
6	GP29 (12,70x0,60)	7,62 m <sup>2</sup>
<b>sveukupno :</b>		<b>100,30 m<sup>2</sup></b>



STAMBENA GRAĐEVINA SG 55  
METKOVIĆ

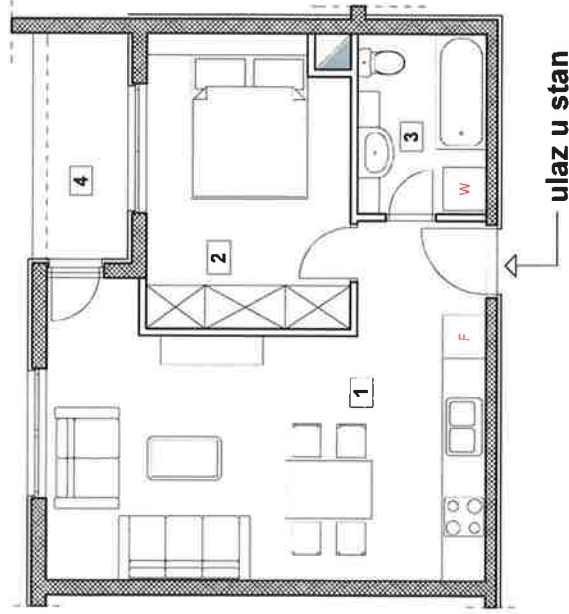


ULAZ 2

4. KAT

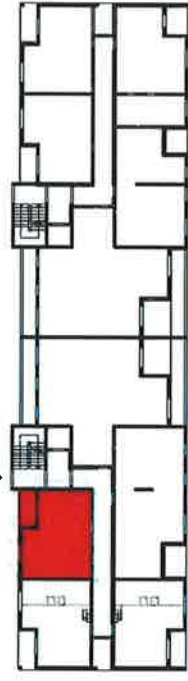
STAN - S24

jednosoban stan m 1:100

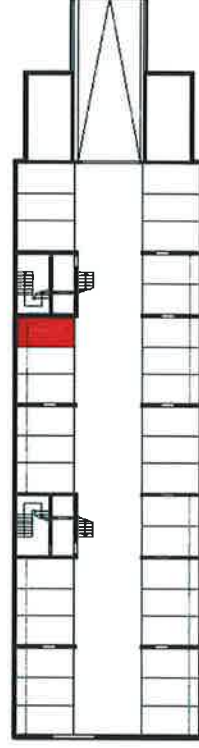


ISKAZ NETTO POVRŠINA - ULAZ 2- STAN S24	
1   dnevni boravak sa kuhinjom	24,70 m <sup>2</sup>
2   soba	11,10 m <sup>2</sup>
3   kupaoznica	4,50 m <sup>2</sup>
4   lođa (4,20 x 0,75)	3,15 m <sup>2</sup>
<b>ukupno stan :</b>	<b>43,45 m<sup>2</sup></b>
5   GP31 (12,8x0,60)	7,68 m <sup>2</sup>
<b>sveukupno :</b>	<b>51,13 m<sup>2</sup></b>

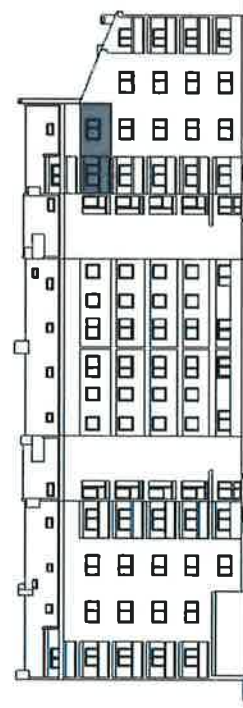
ulaz 2



4. kat



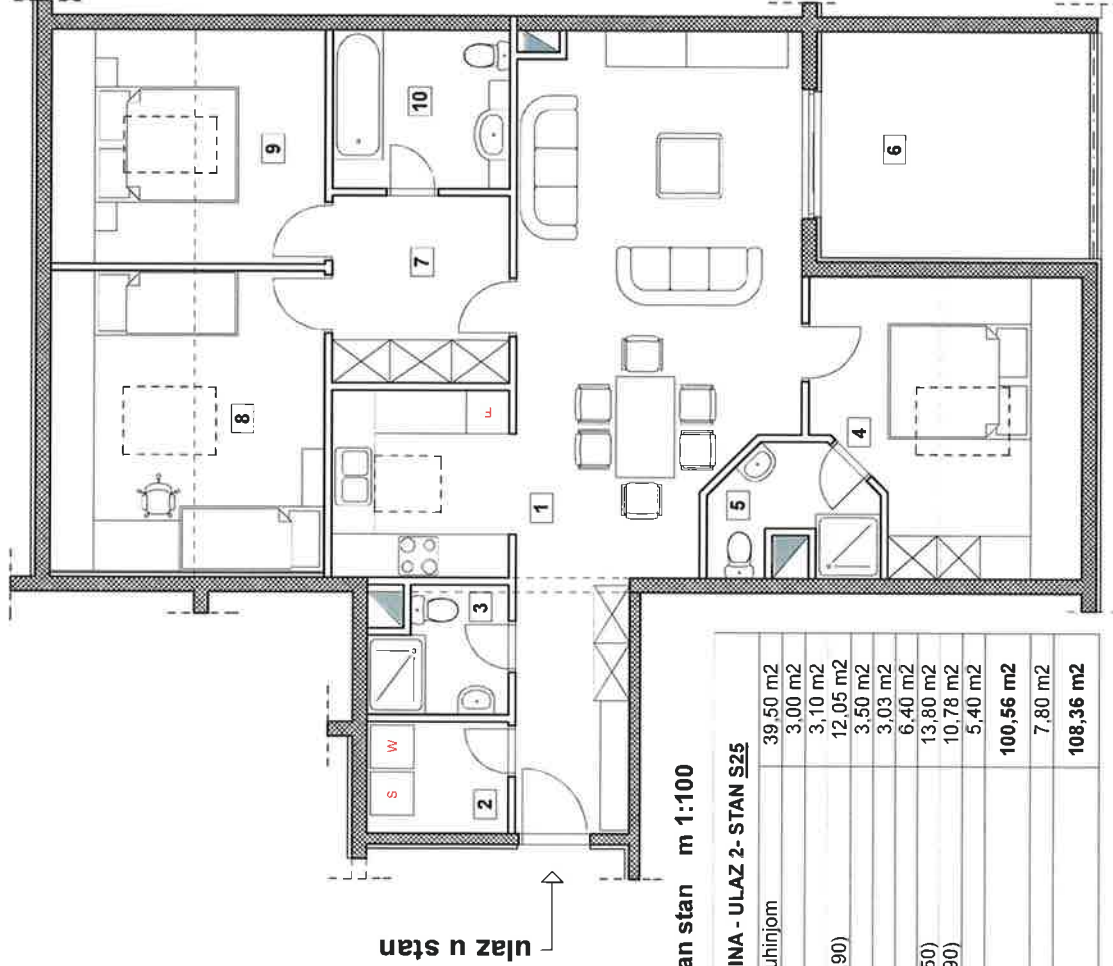
podrum



pogled sjeverno



STAMBENA GRADEVINA SG 55  
METKOVIĆ



trošoban stan m 1:100

ISKAZ NETTO POVRŠINA - ULAZ 2- STAN S25

1	dnevni boravak sa kuhinjom	39,50 m <sup>2</sup>
2	praonica	3,00 m <sup>2</sup>
3	kupaonica	3,10 m <sup>2</sup>
4	soba (8,20 x 0,75+5,90)	12,05 m <sup>2</sup>
5	kupaonica	3,50 m <sup>2</sup>
6	terasa (12,10x0,25)	3,03 m <sup>2</sup>
7	predprostor	6,40 m <sup>2</sup>
8	soba (8,40x0,75+7,50)	13,80 m <sup>2</sup>
9	soba (6,50x0,75+5,90)	10,78 m <sup>2</sup>
10	kupaonica	5,40 m <sup>2</sup>
<b>ukupno stan :</b>		<b>100,56 m<sup>2</sup></b>
6	GP32 (13,00x0,60)	7,80 m <sup>2</sup>
<b>sveukupno :</b>		<b>108,36 m<sup>2</sup></b>

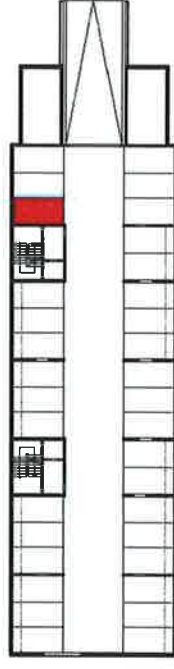
S



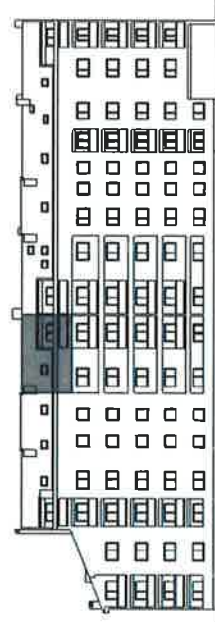
ulaz 2



podzemlje



tlocrt podruma



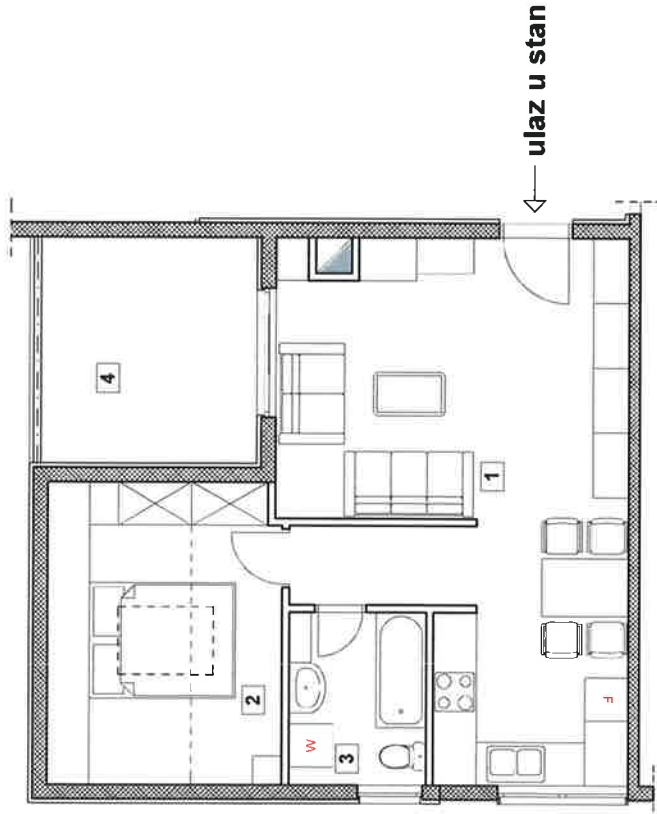
prečelnje  
južno

ULAZ 2

POTKROVLJE

STAN - S27

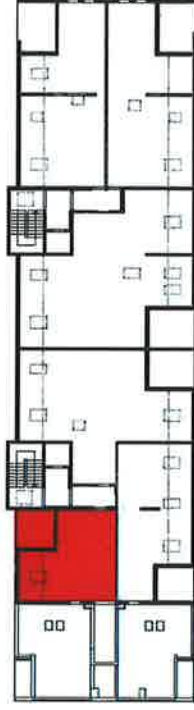
jednosoban stan m 1:100



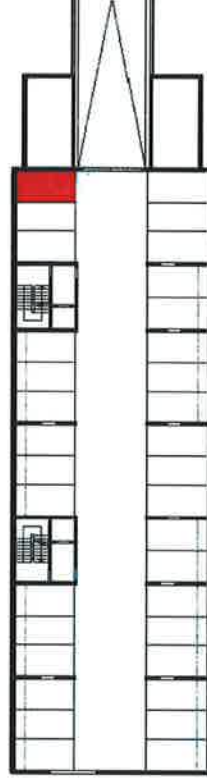
**ISKAZ NETTO POVRŠINA - ULAZ 2- STAN S27**

1 dnevni boravak sa kuhinjom	30,80 m <sup>2</sup>
2 soba	11,40 m <sup>2</sup>
3 kupaonica	4,60 m <sup>2</sup>
4 loba (4,20 x 0,75)	2,43 m <sup>2</sup>
<b>ukupno stan :</b>	<b>49,23 m<sup>2</sup></b>
5 GP34 (13,0x0,60)	7,80 m <sup>2</sup>
<b>sveukupno :</b>	<b>57,03 m<sup>2</sup></b>

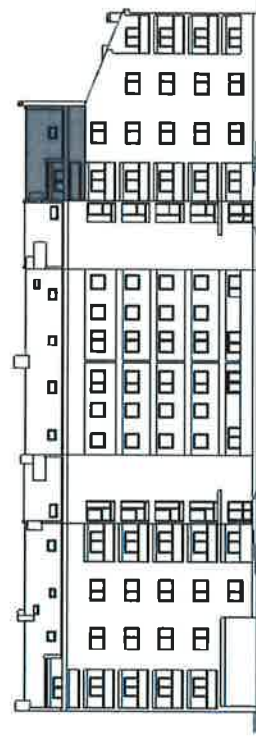
ulaz 2



podkrovlje



podruma



pročelje sjeverno



STAMBENA GRAĐEVINA SG 55  
METKOVIĆ

## KONTAKTI:



**Agencija za pravni promet i posredovanje nekretninama**

**Savska cesta 41/VI,  
10000 Zagreb**

**tel. 01 6331 611**

**fax. 01 6331 655**

**e-mail: [stanogradnja@apn.hr](mailto:stanogradnja@apn.hr)**

**[www.apn.hr](http://www.apn.hr)**